

# The Galloway Dispatch



THE OFFICIAL PUBLICATION OF THE AMERICAN GALLOWAY BREEDERS' ASSOCIATION

Summer 2009

## Time for the NILE and 2010 AGBA Annual Meeting

Hard to believe, but it is already time to start thinking about the Northern International Livestock Exposition (NILE) Galloway show. The pertinent dates are listed below.

In conjunction with the NILE, the AGBA will hold its annual meeting on October 13th, 2009, after the Galloway show. There will be ample time for exhibitors to get their animals settled in for the evening first, and then we will convene at a location to be announced. This may enable some of you to fly in just in time for the Galloway show (1 PM), attend the AGBA meeting on Tuesday evening, and fly out early Wednesday morning, (Billings has no shortage of very early morning flights!), with less 'down' time in between.

This is a great opportunity to meet other breeders, and contribute your ideas for the improvement of your breed association.

**ENTRY DEADLINE: SEPTEMBER 15TH, 2009**

**Barn Available 9 am Sunday Oct. 11**

**Must be in place noon, Monday Oct 12**

**Show time 1 pm, Tues. Oct. 13**

**Release date 6 pm Tues, Oct 13**

**"When  
firearms go,  
all goes. We  
need them  
every hour."**

**~ George  
Washington**

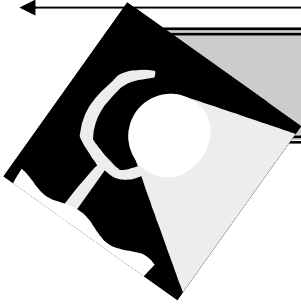
### Inside this issue:

NILE Notes	1
BREEDER PROFILE	2
AGBA CALENDAR	5
PRESIDENT'S CORNER	5
MAKE WAY FOR THE ANNUAL!	6
NWSS Notes	8
Replacement Selection	10
Herdbook Rules Spotlight	11



Galloway: When it has to be the best beef.

THE OFFICIAL PUBLICATION OF THE AMERICAN GALLOWAY BREEDERS' ASSOCIATION



## Spotlight on Galloway Breeders

### **Bar R Galloways The Darrell and Deb Riemer Family**

This issue's *Spotlight* is shining on the Riemer family of Alden, Minnesota. Darrell and Deb Riemer, along with daughter Lorna, run their herd of purebred Galloways in the hilly terrain of south central Minnesota. The family began using Galloway genetics on their Angus herd back in 1985 with the goal of improving mothering ability and calving ease in their cows. The results were dramatic enough that the cow base was eventually converted to purebred Galloway.

Dealing with the wide range of climate conditions of the upper Plains states has also been a plus for the breed. The Riemers report that July temperatures can reach 100 degrees with high humidity, while January and February usher in -30, plus windchills! The Galloway, with its natural tendency toward feed efficiency, further lowers winter feed bills with its thick double winter hair coat.

Bar R Galloways has been selling breeding stock as well as locker beef for many years. Market beef is sold as quarters and halves. A good number of show cattle have come from the farm as well.

Pastures at the farm are a mixture of Kentucky bluegrass, orchard grass, clover and alfalfa. There are some low, poorly drained areas that are primarily reed canary grass. Since corn is a main cash crop, corn stalks provide lots of grazing for the cowherd in winter. Some years Darrell broadcasts turnips or annual ryegrass into the corn during the last cultivating pass, providing protein for the cows come winter as they graze the stalks.

I asked Darrell what changes, if any, he has observed during his nearly 25 years in the breed. He observed that frame score change comes to mind, since in the 80's the cattle industry was still increasing frame size, many Galloway breeders followed suit. Today, however, the Galloway breed is meeting the demand for moderate frame size, a trait producers



*Galloway: When it has to be the best beef.*

THE OFFICIAL PUBLICATION OF THE AMERICAN GALLOWAY BREEDERS' ASSOCIATION

Spotlight, continued from pg 3

are pursuing as input prices remain high and the economic forecast is uncertain.

Knowing the Riemers once raised Angus, I asked Darrell what traits of the Galloway might appeal to commercial cattlemen. At the top of the list is mothering ability. It's a win-win situation when heifers can be depended upon to birth and mother their newborns without assistance from the producer. Darrell also mentions the naturally polled condition of the Galloway (the breed will take the horns off of anything) and also the carcassing ability of the Galloway.

Thanks, Riemers, for taking the time to share a bit about your Galloway operation!

## Forms, Forms, Forms,

<http://www.bovigen.com> Download the forms you need for DNA profiling. Also available on the AGBA website. Contact Bovigen Customer Service at 1-877-233-3362 if you have questions. Plan on about 4 weeks for DNA fingerprinting results of bulls. Other tests turn around in about 1 week.

<http://www.americangalloway.com> Download the forms you need to become a member or renew your membership.

<http://www.clrc.ca/index.shtml> Visit the CLRC website for .pdf forms and to do pedigree searches online



Darrell, Deb and Lorna Riemer take time out from a grooming session with Lorna's 4H heifer project to smile for the camera.

(Is that heifer smiling too?)

Galloway: When it has to be the best beef.



THE OFFICIAL PUBLICATION OF THE AMERICAN GALLOWAY BREEDERS' ASSOCIATION

## Jackson Trail Blazer Ranch

Terry, MT

Bulls and Females for Sale

-All Colors-

(406) 486-5408

[www.jacksongalloways.com](http://www.jacksongalloways.com)

A perfect opportunity to start or add to your grassfed beef herd!



We're overstocked! Call or email today and let's make a deal!

**Herd Reduction Sale!**  
**Bred Cows and Heifers starting at \$700**

308-446-2520 [kevinamy@nctc.net](mailto:kevinamy@nctc.net)

**Thank you  
Advertisers!**

# Hang 5 Galloways



## Breeding Stock For Sale

**Cow/calf pairs. Coming 2-year old bulls. Heifer and bull calves. Take of commercial prices. They have excelled both in the feedlot and in grass finishing programs. Superior meat quality you can depend on. Mountain raised, rugged, and ready to work anywhere.**

If you sell meat,  
I have Bulls that will help.

Semen available.

**Yearling and 2-year Old  
Bulls Available Now!**

## Hang 5 Galloways

778 Pass Creek Road

Parkman, WY 82838

(307) 655-9848

[hang5ranch@msn.com](mailto:hang5ranch@msn.com)

Results of DNA Testing  
&

Allen Williams'  
Ultrasounding:

**100% Tender!**

Heifers, Bulls, & Pairs  
for Sale





Galloway: When it has to be the best beef.

THE OFFICIAL PUBLICATION OF THE AMERICAN GALLOWAY BREEDERS' ASSOCIATION

#### REMINDER!!

2009-2010 Dues were  
DUE June 30th!!

\$80 Full Member

\$20 Associate

\$5 Junior

Is this your **last issue** of *The Dispatch*? If your AGBA membership has lapsed, so will your subscription! Not sure if you are paid up? Visit the AGBA website Breeders' Directory. Only current members are listed. Paid up but not listed? Contact your regional Director.

## President's Box

Happy End of Summer, Galloway Enthusiasts!

It is hard to believe that the annual meeting is right around the corner. As I get older the saying that "time flies" seems in need of updating!! Hmm, maybe something like "X is to 'flies' as trillion is to billion"! Ok, on to the task at hand, my letter to all of you as the President of the AGBA.

The year in review: The new website is indeed up and running!! Gone are the days of browsers not downloading and/or slow downloading. If you have not visited the site I encourage you to do so... I think you will be impressed. The Board of Directors has had two conference calls. This is a work in progress, but having more than one Directors' meeting a year should help the continued growth of the AGBA.

### AGBA 2008-09 Calendar

June 30 Annual dues  
are... due!

September 15 Entry  
deadline for NILE

October 13 NILE Gallo-  
way Show 1 PM

October 13 AGBA  
Annual Meeting, 7 PM

Mid-November Entry  
deadline for NWSS

In the last 10 years the American Galloway Breeders' Association has changed its operation and appearance into a breeder organization that functions and has the public appearance of cattle associations that are much larger. We have led the way in keeping up with DNA technology and made updates to our herdbook rules that many Galloway associations are following. It is the responsibility of every breeder to keep up to date on the herdbook rules. These can be found at [www.clrc.ca/americanalloway.shtml](http://www.clrc.ca/americanalloway.shtml). Scroll down to other forms and select from the American Galloway list. They will soon be available on the AGBA website pending some revision decisions at the upcoming annual meeting

While on the subject of rules, it is very important to read the rules for registering White and Belted Galloways if you are a breeder of these two color patterns. There are many restrictions related to sex and color in these two sections of the herdbook. If you are confused please contact one of the Board of Directors for additional clarification. It is also your responsibility as a conscientious

Continued pg 15



*Galloway: When it has to be the best beef.*

THE OFFICIAL PUBLICATION OF THE AMERICAN GALLOWAY BREEDERS' ASSOCIATION

## ANNUAL TO REPLACE QUARTERLY

Have you secretly admired those slick, color annuals put out by different breed associations, dreaming of the day when your own association would take the plunge and produce just such a publication? Well then, good news for you! Your board of directors have opted to pursue the color annual as a replacement for the quarterly newsletter. There are several advantages to this:

1. Print on demand services now make it possible to print any number of copies as needed in a cost-effective manner. If we need additional copies for an upcoming show, we contact the service provider and request X number of copies to be shipped to the contact person of our choice. No more unused copies.
2. Advertising opportunities that last the entire year, and beyond. If you already receive annuals

Continued pg 7

## *Renaissance Farms Ltd*

EMPORIA, KS 620-343-6757

### **Galloway Genetics for the Grassfed Beef Operator**

Last calf crop from  
*McDuff of Lone Pine*  
is on the ground.

Contact us this fall  
about availability of  
heifer calves.



"Duff" and his  
progeny  
were made for  
grassfed beef  
production.

**McDuff of Lone Pine**

**[galloway@renfarms.com](mailto:galloway@renfarms.com)   [www.renfarms.com](http://www.renfarms.com)**



*Galloway: When it has to be the best beef.*

THE OFFICIAL PUBLICATION OF THE AMERICAN GALLOWAY BREEDERS' ASSOCIATION

from, say, the Australian or Canadian associations, you know that you don't throw them away. They are just too nice, and contain valuable information in an easily stored and accessible format. That means that advertisers in those issues remain fresh and visible even though the issue is 2 or 3 years old. Newsletter simply do not have the same life expectancy.

3. Promotion. Using the color annual format showcases our breed in the manner it deserves. By making these annuals available at shows, field days, conferences and for distribution by breeders, the Galloway breed receives excellent coverage with ample opportunity to educate producers about the breed's attributes.

So be thinking creatively about how you will want to showcase your farm or ranch in your ad for the new annual. Information will be coming soon!



**J-7**

**Grant Galloways**

**Blacks - Reds - Duns**

**J-7**

**Proven on  
Grass**

**Proven in the  
Feed Yard**



Visitors Always Welcome!

**Cattle For Sale At All Times**

**Jim and Kathy Grant 1934 E. 400 S Hazleton, ID 83335**

**(208) 825-5215 208-420-3977 (cell) jimgrant@myway.com**



THE OFFICIAL PUBLICATION OF THE AMERICAN GALLOWAY BREEDERS' ASSOCIATION

**2010 National Western Galloway Show**  
**January 16 - January 20**

We need your support in order to keep the show in Denver! Many breeds are now making the National Western their National Show because of the exposure they receive.

It is a great place to take a break from the early winter weather and to enjoy yourself.

## General Listing of Class Schedule

*Anticipated Entry  
Deadline is  
around  
November 20,  
2009!*

Check out the  
NWSS website  
for  
Premium Book  
information

## 2009 Heifer Calf Classes

## 2008 Yearling Heifers

## 2007 Senior Heifers

## Cow and Cow/Calf Classes

## 2009 Bull Calf Classes

## 2008 Yearling Bull Classes

## 2007 Bull Classes

### Older Mature Bull Class

### Percentage Heifer Calf Classes

### Percentage Yearling Heifer Class

## Percentage and Fullblood Steer Calf Classes

## Classes for the Junior Members

We will again have convenient and affordable motel rooms available at Super 8, which is just minutes from the historic stockyards.

For additional information about classes, motel room reservations, or any other questions, please call show superintendent LeRoy Kindler, (605) 892-5832



*Galloway: When it has to be the best beef.*

THE OFFICIAL PUBLICATION OF THE AMERICAN GALLOWAY BREEDERS' ASSOCIATION

Continued from pg. 11

(ii) White Galloway females registered in the Appendix to Section III must have a solid color pattern and are black, red, or dun. A moderate amount of white on the underside is permissible.

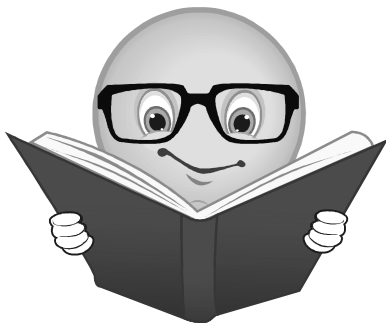
***(They must meet same requirements as animals eligible for Section I Herd Book)*** Bulls with White Galloway ancestry but without white park color patterns are not eligible for registration in the Herd Book. ***(Solid colored bulls out of White Galloway parent(s) are not eligible for registration, period.)***

### Breeder Responsibilities

Breeders, when you sell cattle to those who are new to the breed, make sure you explain the basics of the herd book rules, especially the White Section if it applies. It is a little tricky to the uninitiated!

There is going to be some discussion at the AGBA Directors meeting about further clarifications we might want to make in the herd book rules to remove some of the subjective language regarding the amount and location of white that is permissible on solid animals.

If you have had problems interpreting some portion of the herd book rules, please let your director know so that it can be addressed in October.



Study your herd book rules!

Send in your 4H and State Fair Cattle Show Photos for publication in Fall 2009 Galloway Dispatch!

### Russ and Susan Waples



**B  
R  
A  
S  
S**

**R  
I  
N  
G**

Heifer and bull calves  
available this  
Fall.

Possibly a few yearling  
heifers bred to Lowline bull.  
Come see us at the NILE

**GALLOWAYS**

P.O. Box 544 ■ TERRY, MT ■ 59349

Phone: (406) 635-2114

Email: brgalwap@midrivers.com



*Galloway: When it has to be the best beef.*

THE OFFICIAL PUBLICATION OF THE AMERICAN GALLOWAY BREEDERS' ASSOCIATION

## REPLACEMENT HEIFER SELECTION

**By Joel Jackson**

As weaning time approaches for late winter and spring calvers our attention turns to replacement heifer selection. While a heifer will not spread her DNA as widely as a bull she will give you anywhere from 6 to 10 calves. Choose wisely and you will improve your herd. Choose poorly and your herd will not improve, or worse yet your herd will slide backwards.

In the Galloway Association we get to practice old fashioned phenotype selection. Phenotype is a fancy word for physical appearance. While we do not have EPD's (Expected Progeny Difference), it is still important to collect all the performance data possible. Every bit of data will help you to make a more informed decision when selecting that next dam of distinction.

When making our selection the minimum data we should have available is birth weight, calving ease, weaning weight, and any data available on the sire and dam. This data will help us to make a more informed decision. If you want to sleep through the night when calving it does not make any more sense to keep a heifer with a 100 pound birth weight then it does a bull with one.

As seed stock producers we all have goals in mind. These goals of what type of cattle we want must be kept in mind when making selections. If you always select the biggest heifers in the herd you should not be surprised when your average cow size gets bigger. If you want to maintain a more moderate cow size, select a more moderate heifer.

Here are the things we should look at when selecting replacement heifers:

- Birth weight, weaning weight, and calving ease
- Legs
- Back
- Belly
- Bone structure

The performance numbers are self explanatory as I described above. The rest of these selection indicators are much more subjective. When looking at the legs you want to make sure the hooves are not turned in or out. Also the hocks should have a nice angle to them. Look over the hips, shoulders, and knees to look for any defects. Remember, in order



Galloway: When it has to be the best beef.

THE OFFICIAL PUBLICATION OF THE AMERICAN GALLOWAY BREEDERS' ASSOCIATION

## Herdbook Rules Spotlight

### Herd Book Rules Spotlight

OK, so you've purchased some white Galloways, and now you're working up registration paperwork for some offspring. Here are a few basic rules to be familiar with, right out of the Herd Book Rules. In bold type I have inserted comments for clarification (hopefully!)

#### 4. White Galloways

(a) The following cattle are eligible for registration in Section III (**White Herd Book**) of the Herd Book, provided they exhibit the proper color pattern and are in all other respects eligible:

(i) animals whose sire and dam are both registered in Section III.

(ii) animals with one parent registered in Section III whose other parent is registered in Section I or the Appendix to Section III. (**Section III appendix animals are solid colored females out of White Park Section III females**)

(iii) animals with one parent registered in Section I, Section III, or the Appendix to Section III, (**meaning, one parent can be an animal from the Solid herd book,**) and whose other parent is registered in the herd book of another association in accordance with rules consistent with those of the AGBA. (**the other parent can be from either the White Herd Book, or the White Herd Book Appendix**)

(iv) animals registered in, or eligible for registration in, the herd book of another association in accordance with rules which are consistent with those of the AGBA.

(b) White Galloways registered in Section III must have a white park color pattern and are white with black, red, or dun pigment on the nose, ears, and hooves and around the eyes. Some pigmentation on the legs, udder, and poll and a moderate degree of freckling throughout the body are permissible.

(e) (i) Females are eligible for registration in an Appendix to Section III of the Herd Book if they do not exhibit the proper white park color pattern but are in all other respects eligible for registration in Section III.

Continued pg 9)



Galloway: When it has to be the best beef.

THE OFFICIAL PUBLICATION OF THE AMERICAN GALLOWAY BREEDERS' ASSOCIATION



Yes! I want to receive each quarterly issue of *The Galloway Dispatch*

## American Galloway Breeders' Association

### Membership Application

Name \_\_\_\_\_

Address \_\_\_\_\_

City \_\_\_\_\_ State \_\_\_\_\_ Zip \_\_\_\_\_

Phone \_\_\_\_\_ E-Mail \_\_\_\_\_

Make Checks payable to American Galloway  
Breeders Association (AGBA)

**Mail to** AGBA,  
c/o CLRC  
2417 Holly Lane  
Ottawa, ON K1M 017 CANADA

**Full Annual Membership Fee: \$80 annually** OR **Associate Membership Fee: \$20 annually** (Please circle one)

Signature: \_\_\_\_\_ Date: \_\_\_\_\_

**Both of the DD Ranch  
Herd Sires Carry  
all 8 Bovigen Stars for  
Feed Efficiency.**



**Deb & Dene Vance**

Ft. Lupton, CO  
debvance@theddranch.com  
970-785-6033

Come see us at the Denver Stock Show in  
January, and join us for the annual Party in  
the Pen

**DD  
RANCH**  
*Galloways*

### **White Females**

**Cheaper by the  
Dozen!  
Special Package  
Pricing  
when buying 2 or  
more.**

**Semen Available.  
Please Visit Our  
Website**

**PAP Tested Herd**

**Thank You to Dawn,  
Erik and Remi Swenson of  
Paradise, TX for their  
purchase of 2 White Gallo-  
way Heifers**



**Thank you to  
Thomas View Farm,  
Boonsboro, MD  
for their purchase of a cow/  
calf pair**





Galloway: When it has to be the best beef.

THE OFFICIAL PUBLICATION OF THE AMERICAN GALLOWAY BREEDERS' ASSOCIATION

## Maple View Acres

*Herd Sire: Grand Duke T10 (white)  
sired by Willowbend Peregrine out of*

***Sons and Daughters Now Available!***

*Allen and Nancy Olson  
13655 County Road 41, Cologne, MN 55322  
(952) 466-2504.*

**Its True. With a feed efficiency of 4.56 the Galloway ranked 1st of 17 breeds in the 2008 Olds College Steer-a- Year program!**

**Galloway!**

**Bar R Galloways**

**Bulls and Females  
For Sale Now**

**Darrell and Deb Riemer  
Alden, MN**

**brgalwys@smig.net  
507-265-3878**

Continued from pg 11

to get out and graze a cow needs good legs and feet.

The back and belly need to have a straight line. A hump in the spine or pot gut are two things I stay away from. Calves may get a pot gut when on feed but a better animal will not have one coming right off the cow or especially once they approach sexual maturity.

Last we should look at the bone structure. Is the structure petite and feminine or large and bulky? Obviously a breeder should stay away from the extremes on both ends of the scale but bone structure is another item you can choose. Bone structure is like birth or weaning weights if you want more feminine cattle you can select for smaller bone structure. Just keep in mind if you always select the most petite heifer eventually you will be at the extreme end of the scale. One last important thing I look for in heifers and bulls is the tail head. There are some indicators that if the tail head has a hump, i.e. rises above the spine level, the pelvis is tipped. This slight tilt in the pelvis can contribute to calving difficulties.

Have fun making your selections, I know I will. Remember if a cow does not meet your expectations you can always replace her.

By Joel Jackson

AGBA Director at Large,

Jackson Trail Blazer Ranch

---



---

*Galloway: When it has to be the best beef.*

---



THE OFFICIAL PUBLICATION OF THE AMERICAN GALLOWAY BREEDERS' ASSOCIATION

# Trapper Galloway Ranch

**\*\*Attention Galloway Breeders\*\***

We will have a great selection of Galloway bulls and females of foundation quality available in 2009-2010!

Floyd "Kit" Smith  
925 N. 7th Apt 6  
Greybull, WY 82426  
**(307) 765-2971**

[www.trappergallowayranch.com](http://www.trappergallowayranch.com)

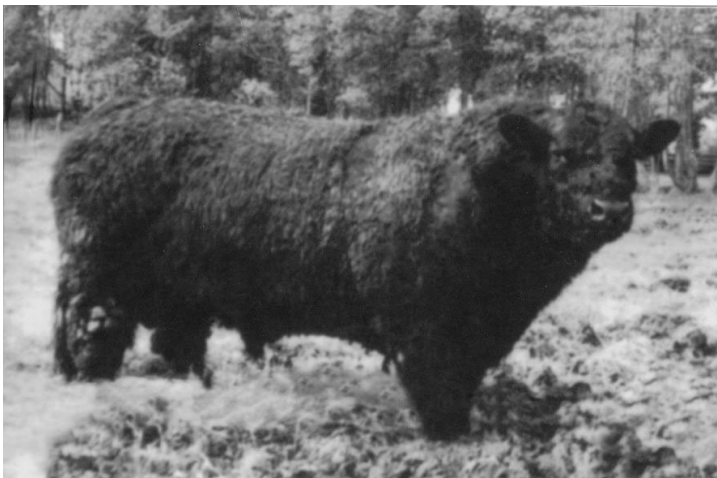
[kit@trappergallowayranch.com](mailto:kit@trappergallowayranch.com)



## ***Dandy William of CBI***

Embryos and Calves expected in next 2 years!

Possibly the same from Emperor of Upper Barr!



## ***Geordawn Axel***

Bull calves at least half-brothers to this bull will be offered in the next 2 years!



## ***Decebe of Trapper***

Reserve Champion at the 2009 National Western Stock Show. Half and full brothers will be available in 2009-2010



*Galloway: When it has to be the best beef.*

THE OFFICIAL PUBLICATION OF THE AMERICAN GALLOWAY BREEDERS' ASSOCIATION

Prez's Corner, continued from pg 5

breeder to explain the rules when selling breeding stock to new members.

At the annual meeting we elect the Board of Directors and Officers for the AGBA, and we need new people to fill these positions. For too long the Board has relied upon a small revolving pool of people who are willing to stand for election AND tackle the duties they are tasked with. We need new energy and new ideas. New directors are the catalyst with which to grow. The conference-call opportunities that exist these days have done away with the need to travel. Technology makes it easy to bring ideas and energy to the improvement of the Association for the benefit of all.

The Galloway breed is still poised to make resurgence as a breed. Last year it was \$4/gal gas. This year it is a bad economy with falling demand for everything. Ranchers are having to look for creative ways to squeeze more money from the cattle herd. Efficiency has become a buzz word for the industry. AGBA members who attended the Denver Stock Show were amazed at how frame scores are shrinking even on show cattle. The Association website and many breeders have reported an increase in people asking about the grazing habits and calving ease of the Galloway. The perfect storm is setting up for the Galloway breed to once again flourish. We just need to be prepared when it happens. And that means we need the efforts of every AGBA member!

June 30<sup>th</sup> was the end of the AGBA's fiscal year. That is when your 2010 dues were due. If you dues have not been received by the first of Nov., you will be dropped from the Breeders' Directory and the mailing list for the newsletter. Updates will be made to the Breeders Directory twice a year/or as necessary for new members. Translation if you are late in your renewal people interested in Galloway cattle will not be able to find you for possibly up to 6 months.

Please help the Association promote the Galloway breed and the breeders that raise them. It is your continued support that keeps this breed alive in the USA.

***Sarah Bowman, President***

**American Galloway Breeders' Association**



**Galloway: When it has to be the best beef.**

THE OFFICIAL PUBLICATION OF THE AMERICAN GALLOWAY BREEDERS' ASSOCIATION

Want to receive the Galloway Dispatch quarterly? Complete this form and send it \$20 Associate Membership dues to:

American Galloway Breeders' Assoc.  
c/o Canadian Livestock Records Corp  
2417 Holly Lane  
Ottawa, ON K1V 0M7 Canada

Name: \_\_\_\_\_

Address: \_\_\_\_\_

City/State: \_\_\_\_\_

Zip: \_\_\_\_\_

Phone: \_\_\_\_\_

## AGBA Directors

<b>Pacific Zone</b>	<b>Gayle Cerullo (WA)</b>	<b>(360) 675-2379</b>
<b>President (Mtn)</b>	<b>Sarah Bowman (WY)</b>	<b>(307) 655-9848</b>
<b>V.P (Mtn)</b>	<b>Leroy Kindler (SD)</b>	<b>(605) 569-1209</b>
<b>Central Zone</b>	<b>Darrell Riemer (MN)</b>	<b>(507) 265-3878</b>
	<b>Harley Blegen (ND)</b>	<b>(701) 645-9073</b>
<b>Eastern Zone</b>	<b>Joan Hoffman (MI)</b>	<b>(517) 627-2310</b>
<b>Sec/Treas</b>	<b>Joyce Jones (PA)</b>	<b>(724) 924-2938</b>
<b>Directors at Large</b>	<b>Shelly Andres (MT)</b>	<b>(406) 784-2509</b>
	<b>Judy Decker (KS)</b>	<b>(620) 343-6757</b>
	<b>Susan Waples (MT)</b>	<b>(406) 635-2114</b>
	<b>Joel Jackson (MT)</b>	<b>(406) 486-5408</b>
	<b>Greg Morine (IL)</b>	<b>(309) 895-2189</b>

**AMERICAN GALLOWAY  
BREEDERS ASSOCIATION**

**c/o Canadian Livestock Records Corporation**

The Galloway Dispatch is published quarterly by the American Galloway Breeders' Association.: c/o Canadian Livestock Records Corporation ■ 2417 Holly Lane ■ Ottawa, ON. K1V 0M7 ■ Canada ■ Editor: Judy K. Decker ■ 1800 E. 18th ■ Emporia, KS 66801 ■ 620-343-6757